



Day 4:

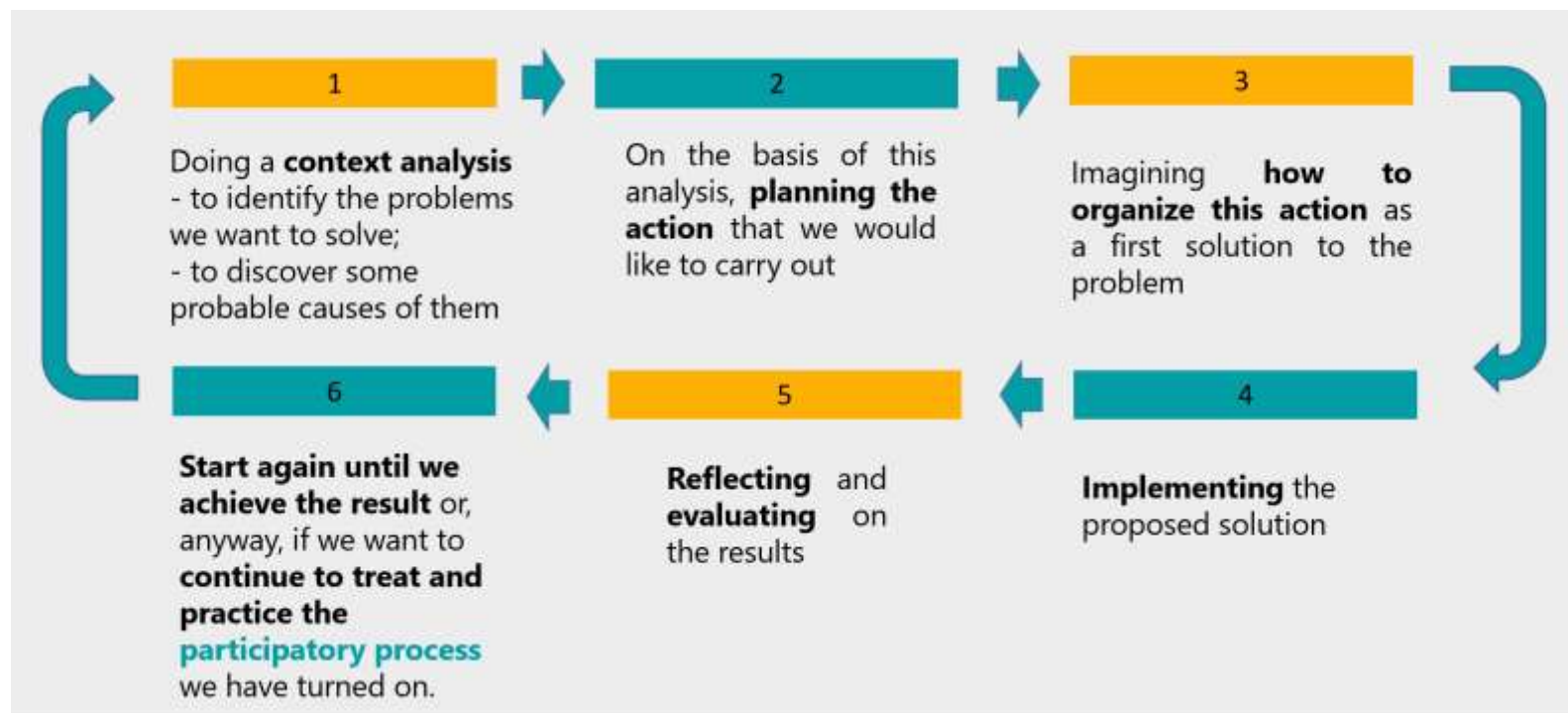
**Part 2 – From knowledge to analysis: managing
a participatory process**

ACTION RESEARCH METHODOLOGY: THE NEXT STEP

After making a context analysis and knowing something more of out territory and people who are living in, **the action research goes on**, while the transformative process is in act

People who participate to the action research are changing

The reality where we are working is changing



IN ACTION RESEARCH THE CHANGE DOESN'T HAPPEN AT THE END OF THE PROCESS, BUT THROUGHOUT

- ❑ In this process – in each step - the actors can take place at different levels and with different roles on the basis of their competences, knowledges, abilities, vocation, personal availability.
- ❑ It's important to realize the conditions to **co-imagine**, **co-design** and **co-plan** this process with all people involved:
 - ✓ trainers
 - ✓ trainees
 - ✓ trainees' families
 - ✓ VET providers
 - ✓ Others educational agencies
 - ✓ Local business and companies (involved in SSE or not)
 - ✓ Local and national institutions



ACTION RESEARCH: a participatory process

- ☐ How can we ensure that **the number of (actors) action-researcher** is as **large** as possible and as **representative** as possible of their reality and experiences?
- ☐ It's really difficult to involve all actors and stakeholders at the same time: **which people do I decide to involve first?** What **criteria** do I use to choose them?



ACTION RESEARCH: a participatory process

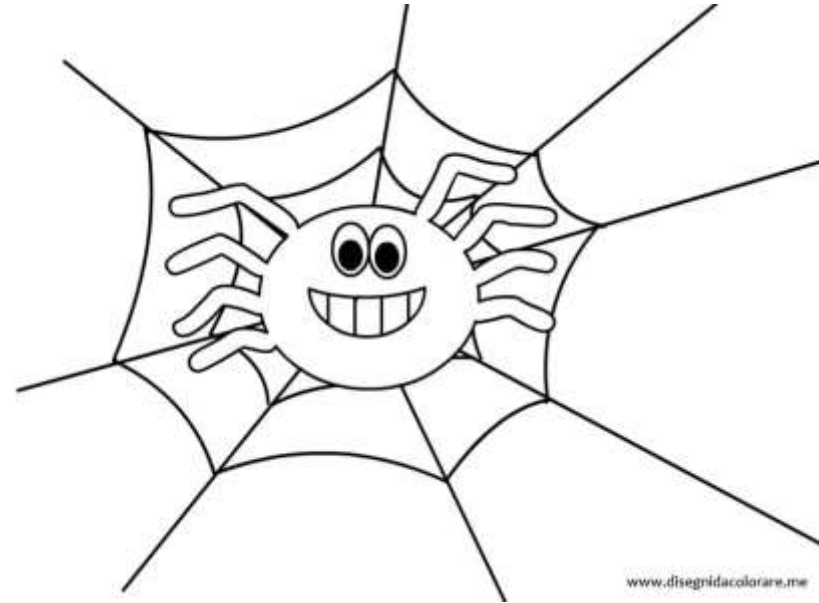
- ❑ How can we **welcome** the actors to involve with their characteristics, experiences and **differences**?
- ❑ What **tools** and **methodologies** can we use to ensure **participation**?



- ❑ What **role** should **the trainer** play in this process?
- ❑ How can we recognize new **skills** to the trainers **without** necessarily creating a new **professional profile** in charge of this process?



OR



**VET and SSE TRAINERS TO BUILD A TRAINING COMMUNITY
ORIENTED TO COMMON GOOD AND SUSTAINABLE LOCAL DEVELOPMENT**